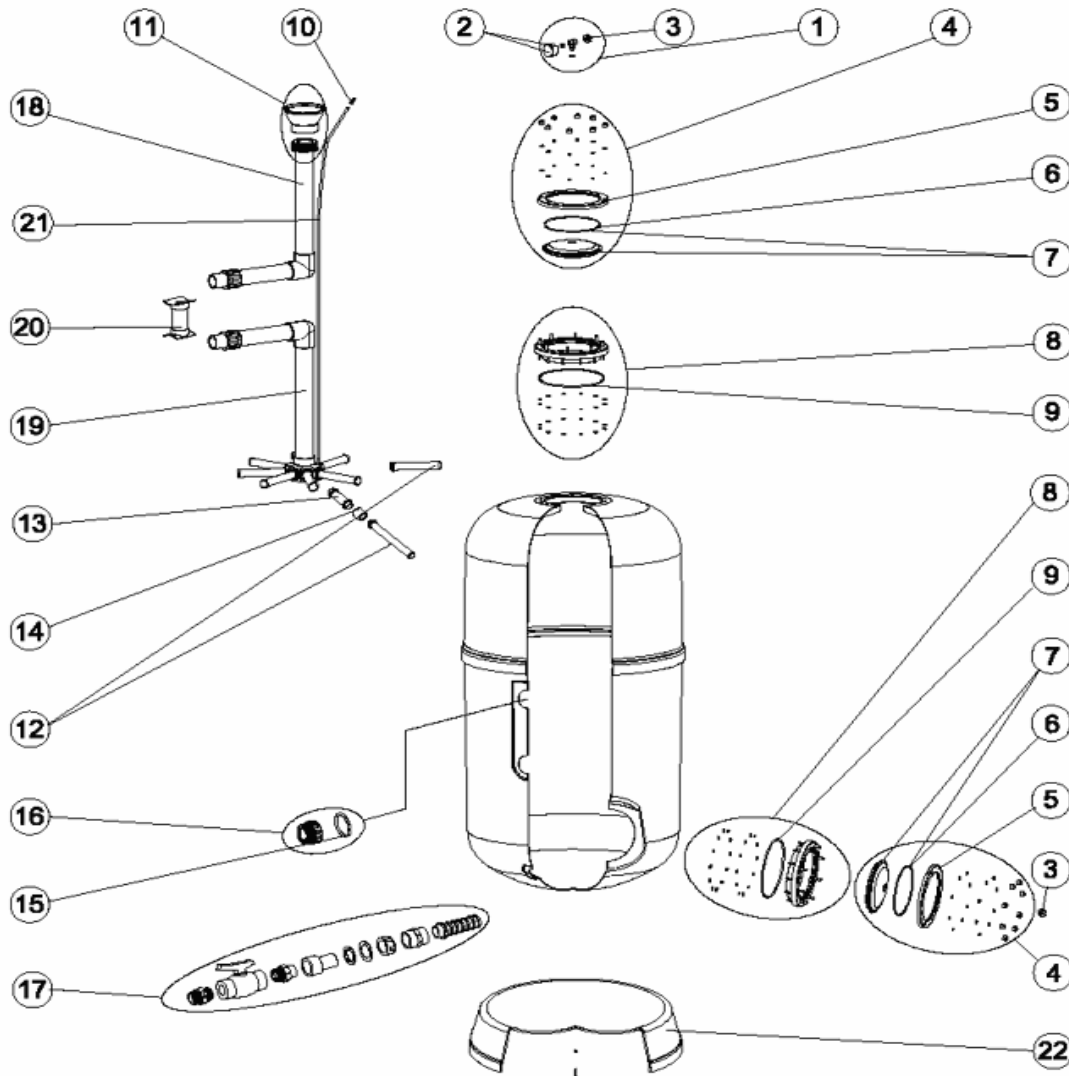


CODE **34029, 34030, 34031, 41187**

BESCHREIBUNG: **FILTER ARTIC D. 500-650-800-950**

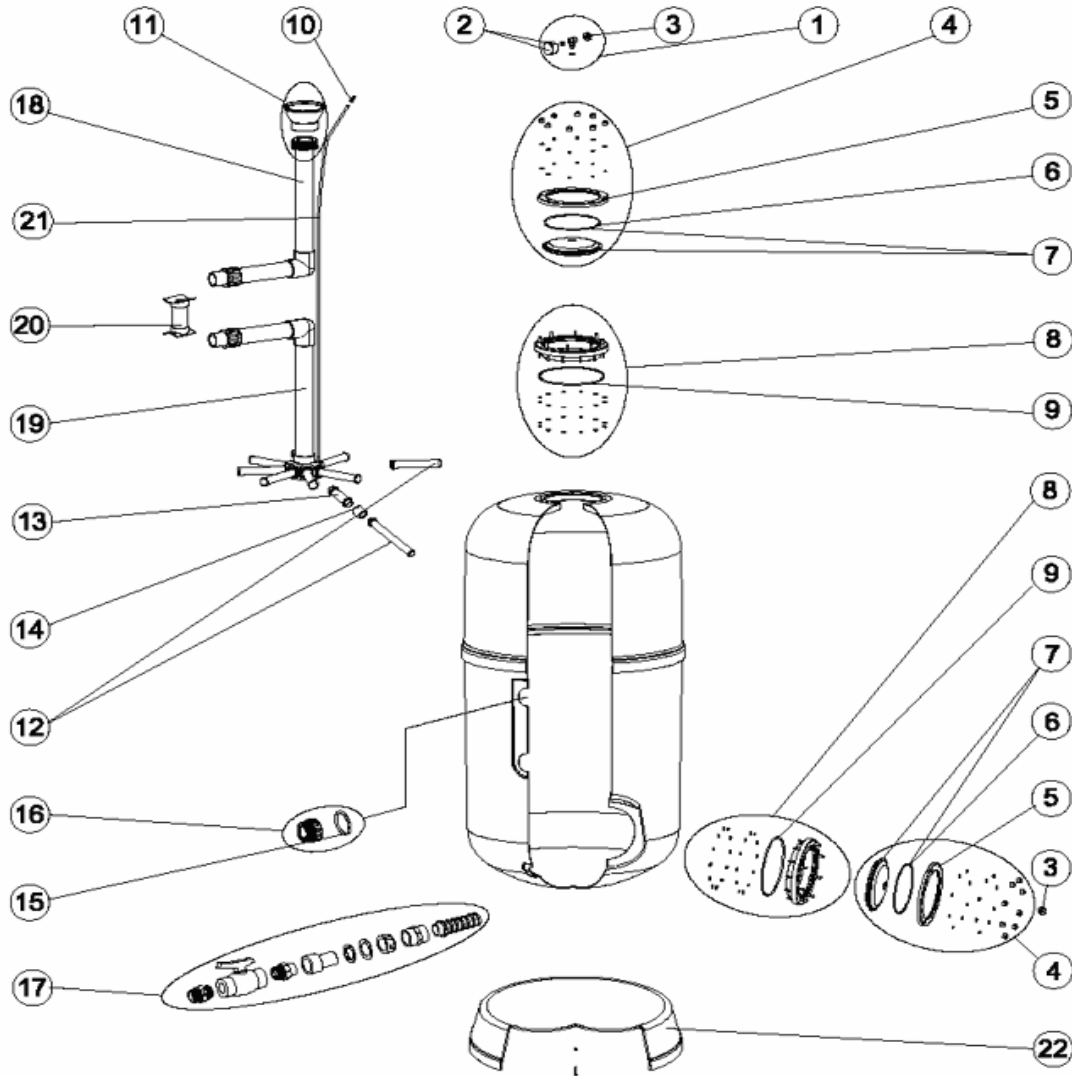


DEUTSCHE

POS	CODE	BESCHREIBUNG	POS	CODE	BESCHREIBUNG
1	4404180404	MANOMETER + ENTLÜFTUNG	16	4404040103	"BEHÄLTERVERSCHRAUBUNG + O-RING 1 1/2""
2	4404180405	"MANOMETER 1/8" 3 KG./CM"	16	4404040112	"VERSCHRAUBUNG 2" + O-RING"
3	4404130107	"KAPPE FÜR ABLASS 1/4" NEUTRAL MIT DICHTUNG"	16	4404290108	"ANSCHLUSS AUSLAUF 2 1/2""
4	4404303002	SET DURCHSICHTIGER DECKEL	17	4404303004	ENTLÜFTUNGSSET
5	4404160849	BLENDENSATZ DECKEL	18	34029R0412	OBERER WASSERVERTEILER D.500
6	4404260106	DICHTUNG FÜR BEFESTIGUNGSRING TOP-VENTIL	18	34030R0414	OBERER WASSERVERTEILER D.650
7	4404160847	FILTERDECKEL D. 220 SCHWARZ	18	34031R0410	"OBERER WASSERVERTEILER D.800 2""
8	4404160809	ANSATZRING 20 SCHRAUBEN	18	41187R0411	"OBERER WASSERVERTEILER D.950 2 1/2""
9	4404020116	O-RING 255X4	19	34029R0422	UNTERER WASSERVERTEILER D. 500
10	4404040108	FILTER ENTLÜFTUNG	19	34030R0425	UNTERER WASSERVERTEILER D. 650
11	4404301004	VERTEILER KONUS D. 50	19	34031R0423	UNTERER WASSERVERTEILER D. 800
11	4404300910	VERTEILER KONUS D. 63	19	41187R0421	UNTERER WASSERVERTEILER D. 950 2 1/2"
11	4404190324	VERTEILER KONUS D. 75	20	36055R0424	UNTERSTÜTZUNGSKOLLEKTOR D. 950
12	4404300915	"FILTERSTERN SCHLITZROHR 1" 175 MM"	21	04959R0434	WASSERENTLEERUNG D.6
12	4404300916	"FILTERSTERN SCHLITZROHR 1" 225 MM"	22	19781R0102	FUSS FILTER D 500
13	4404260419	"FILTERSTERN SCHLITZROHR 1" 100MM"	22	34030R0101	FUSS FILTER D 650
14	4404260418	"MUFFE 1""	22	34031R0101	FUSS FILTER D 800
15	4404040115	O-RING D 60X8	22	15788R0151	FUSS FILTER D 950
15	4404040211	O-RING D 70X5			

CODE **34029, 34030, 34031, 41187**

DESCRIPTION: **ARTIC. D. FILTERS D. 500-650-800-950**

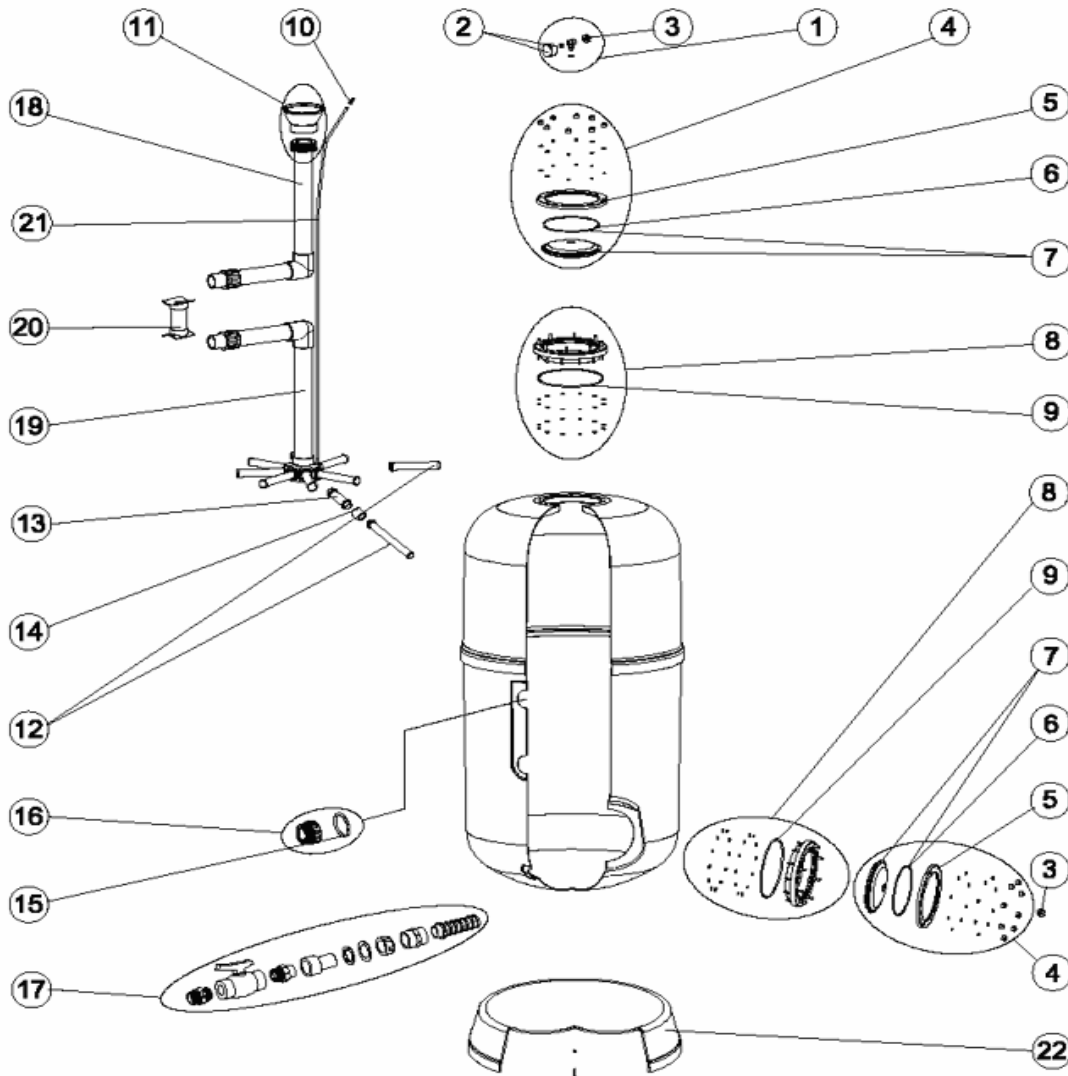


ENGLISH

POS	CODE	DESCRIPTION	POS	CODE	DESCRIPTION
1	4404180404	COMPLETE PRESSURE GAUGE UNIT	16	4404040103	"FITTING 1 1/2" + O-RING"
2	4404180405	"PRESSURE GAUGE 1/8" 3 KG./CM"	16	4404040112	"2" OUTLET FITTING + O-RING"
3	4404130107	ANONYMOUS CAP	16	4404290108	"OUTLET UNION 2 1/2" + O-RING"
4	4404303002	SET LID	17	4404303004	DRAIN SET
5	4404160849	LIF FIXING RING	18	34029R0412	DIFFUSER ASSEMBLY D.500
6	4404260106	VALVE TOP RING FIXING GASKET	18	34030R0414	DIFFUSER ASSEMBLY D.650
7	4404160847	FILTER LID D. 220 BLACK	18	34031R0410	"DIFFUSER ASSEMBLY D. 800 2"
8	4404160809	20-SCREW NECK RING	18	41187R0411	"DIFFUSER ASSEMBLY D.950 2 1/2"
9	4404020116	"O" RING 255X4	19	34029R0422	COLLECTOR ASSEMBLY D.500
10	4404040108	AIR PURGE	19	34030R0425	COLLECTOR ASSEMBLY D.650
11	4404301004	DIFFUSER CONE D. 50	19	34031R0423	COLLECTOR ASSEMBLY D.800
11	4404300910	DIFFUSER CONE D. 63	19	41187R0421	COLLECTOR ASSEMBLY D.950 2 1/2"
11	4404190324	DIFFUSER CONE D. 75	20	36055R0424	COLLECTOR SUPPORT D.950
12	4404300915	"MANIFOLD ARM 1" 175 MM"	21	04959R0434	TUBE 6MM
12	4404300916	"MANIFOLD ARM 1" 225 MM"	22	19781R0102	FILTER BASE D. 500
13	4404260419	"MANIFOLD ARM 1" 100 MM"	22	34030R0101	FILTER BASE D. 650
14	4404260418	"UNION 1"	22	34031R0101	FILTER BASE D. 800
15	4404040115	O' RING D. 60X8	22	15788R0151	FILTER BASE D. 950
15	4404040211	O' RING D. 70X5			

CODIGO **34029, 34030, 34031, 41187**

DESCRIPCION: **FILTROS ARTIC D. 500-650-800-950**

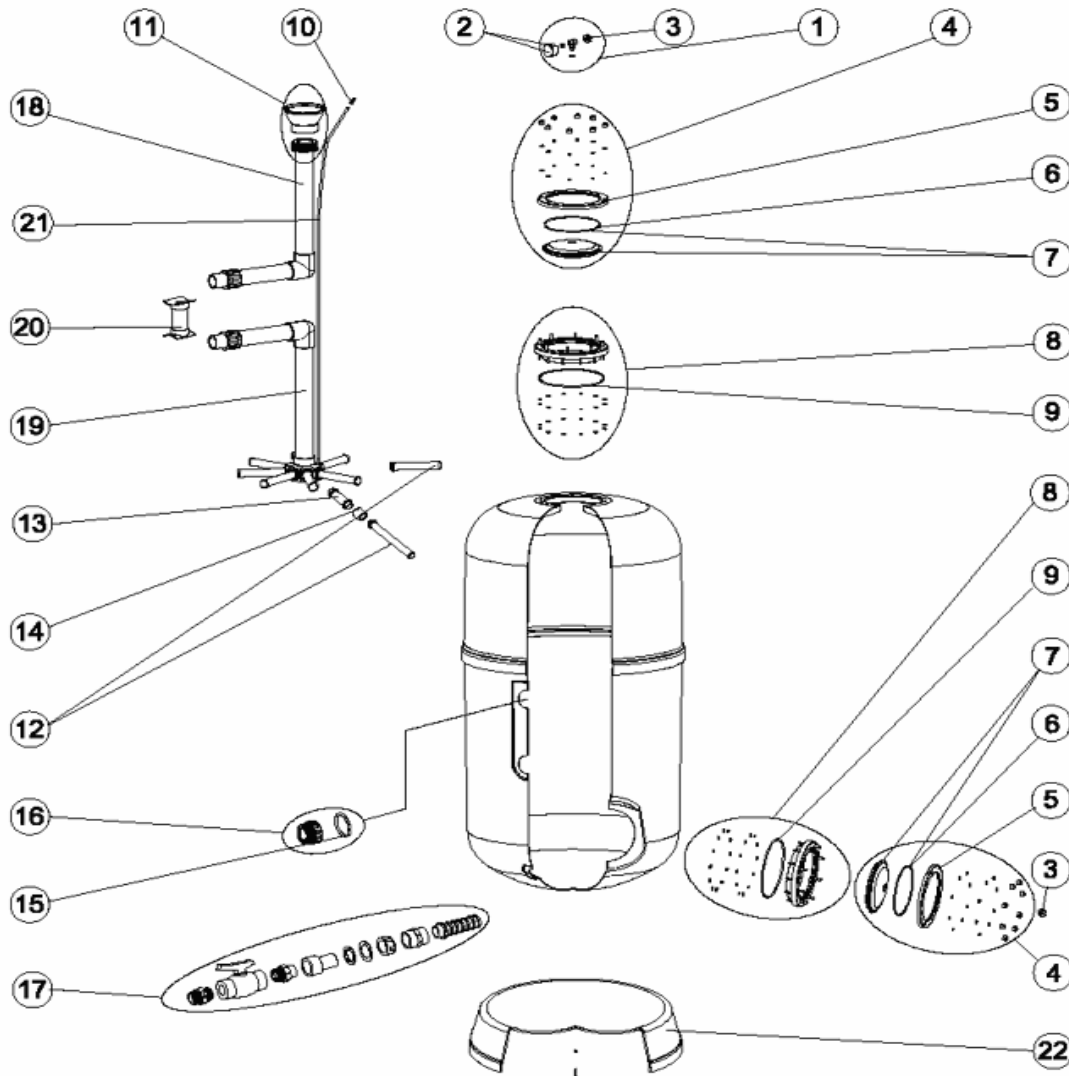


ESPAÑOL

POS	CODIGO	DESCRIPCION	POS	CODIGO	DESCRIPCION
1	4404180404	MANOMETRO COMPLETO	16	4404040103	RACORD 1 1/2" + JUNTA TORICA
2	4404180405	MANOMETRO 1/8" 3 KG/CM	16	4404040112	"RACORD SALIDA 2" + JUNTA TORICA"
3	4404130107	TAPON PURGA 1/4" ANONIMO CON JUNTA	16	4404290108	RACOR SALIDA 2 1/2" + JUNTA TORICA
4	4404303002	GRUPO TAPA NEGRA FILTRO A/TORNILLOS	17	4404303004	C.JTO. PURGA
5	4404160849	ARO FIJACION TAPA	18	34029R0412	C.JTO. DIFUSOR D.500
6	4404260106	JUNTA ARO FIJACION VALVULA	18	34030R0414	C.JTO. DIFUSOR D.650
7	4404160847	TAPA FILTRO D. 220 NEGRA	18	34031R0410	"C.JTO. DIFUSOR D.800 2""
8	4404160809	ARO CUELLO 20 TORNILLOS	18	41187R0411	"C.JTO. DIFUSOR D.950 2 1/2""
9	4404020116	JUNTA TORICA 255X4	19	34029R0422	C.JTO. COLECTOR D.500
10	4404040108	PURGA AIRE	19	34030R0425	C.JTO. COLECTOR D.650
11	4404301004	CONO DIFUSOR D.50	19	34031R0423	C.JTO. COLECTOR D.800
11	4404300910	CONO DIFUSOR D. 63	19	41187R0421	C.JTO. COLECTOR D.950 2 1/2"
11	4404190324	CONO DIFUSOR D.75	20	36055R0424	SOPORTE COLECTOR - DIFUSOR D.950
12	4404300915	BRAZO COLECTOR 1" 175 MM	21	04959R0434	TUBO PVC D.6
12	4404300916	BRAZO COLECTOR 1" 225 MM	22	19781R0102	PIE FILTRO D. 500
13	4404260419	BRAZO COLECTOR 1" 100 MM	22	34030R0101	PIE FILTRO D. 650
14	4404260418	MANGUITO ENLACE UNION 1"	22	34031R0101	PIE FILTRO D. 800
15	4404040115	JUNTA TORICA D. 60X8	22	15788R0151	PIE FILTRO D. 950
15	4404040211	JUNTA TORICA D. 70X5			

CODE 34029, 34030, 34031, 41187

DESCRIPTION: **FILTRES ARTIC D. 500-650-800-950**

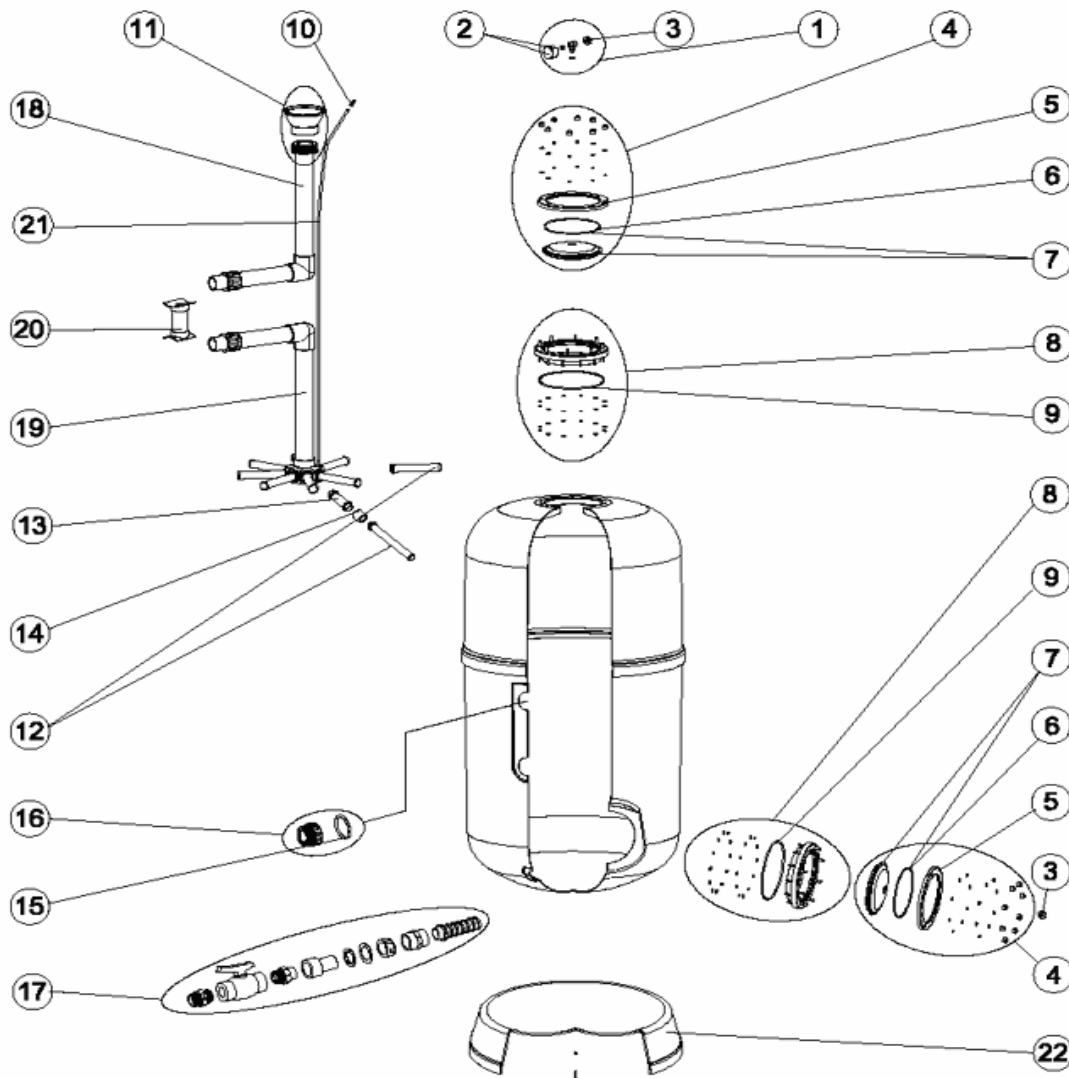


FRANCAIS

POS	CODE	DESCRIPTION	POS	CODE	DESCRIPTION
1	4404180404	MANOMETRE COMPLET	16	4404040103	"RACCORD 1 1/2" + JOINT TORIQUE"
2	4404180405	"MANOMETRE 1/8" 3 KG./CM"	16	4404040112	"RACCORD SORTIE 2" + JOINT TORIQUE"
3	4404130107	"BOUCHON PURGE 1/4" ANONYME AVEC JOINT"	16	4404290108	"RACCORD SORTIE 2 1/2" + JOINT TORIQUE"
4	4404303002	ENSEMBLE COUVERCLE	17	4404303004	ENSEMBLE PURGE
5	4404160849	BRIDE DE FIXATION COUVERCLE	18	34029R0412	ENSEMBLE DIFFUSEUR D.500
6	4404260106	JOINT BRIDE FIXATION VANNE TOP	18	34030R0414	ENSEMBLE DIFFUSEUR D.650
7	4404160847	COUVERCLE FILTRE D. 220 NOIR	18	34031R0410	"ENSEMBLE DIFFUSEUR D.800 2""
8	4404160809	BRIDE GORGE 20 VIS	18	41187R0411	"ENSEMBLE DIFFUSEUR D.950 1 1/2""
9	4404020116	JOINT TORIQUE 255X4	19	34029R0422	ENSEMBLE COLLECTEUR D. 500
10	4404040108	PURGE D'AIR	19	34030R0425	ENSEMBLE COLLECTEUR D. 650
11	4404301004	DIFUSOR CONIQUE SUPERIOR D. 50	19	34031R0423	ENSEMBLE COLLECTEUR D. 800
11	4404300910	DIFUSOR CONIQUE SUPERIOR D. 63	19	41187R0421	ENSEMBLE COLLECTEUR D. 950 2 1/2"
11	4404190324	DIFUSOR CONIQUE SUPERIOR D. 75	20	36055R0424	SUPPORT COLLECTEUR D. 950
12	4404300915	"BRAS DE REPARTITEUR 1" 175 MM"	21	04959R0434	TUBE PURGE D.6
12	4404300916	"BRAS DE REPARTITEUR 1" 225 MM"	22	19781R0102	SOCLE FILTRE D 500
13	4404260419	"BRAS DE REPARTITEUR 1" 100MM"	22	34030R0101	SOCLE FILTRE D 650
14	4404260418	"MANCHON UNION 1""	22	34031R0101	SOCLE FILTRE D 800
15	4404040115	JOINT TORIQUE D 60X8	22	15788R0151	SOCLE FILTRE D 950
15	4404040211	JOINT TORIQUE D 70X5			

CODICE **34029, 34030, 34031, 41187**

DESCRIZIONE: **FILTRI ARTIC D. 500-650-800-950**

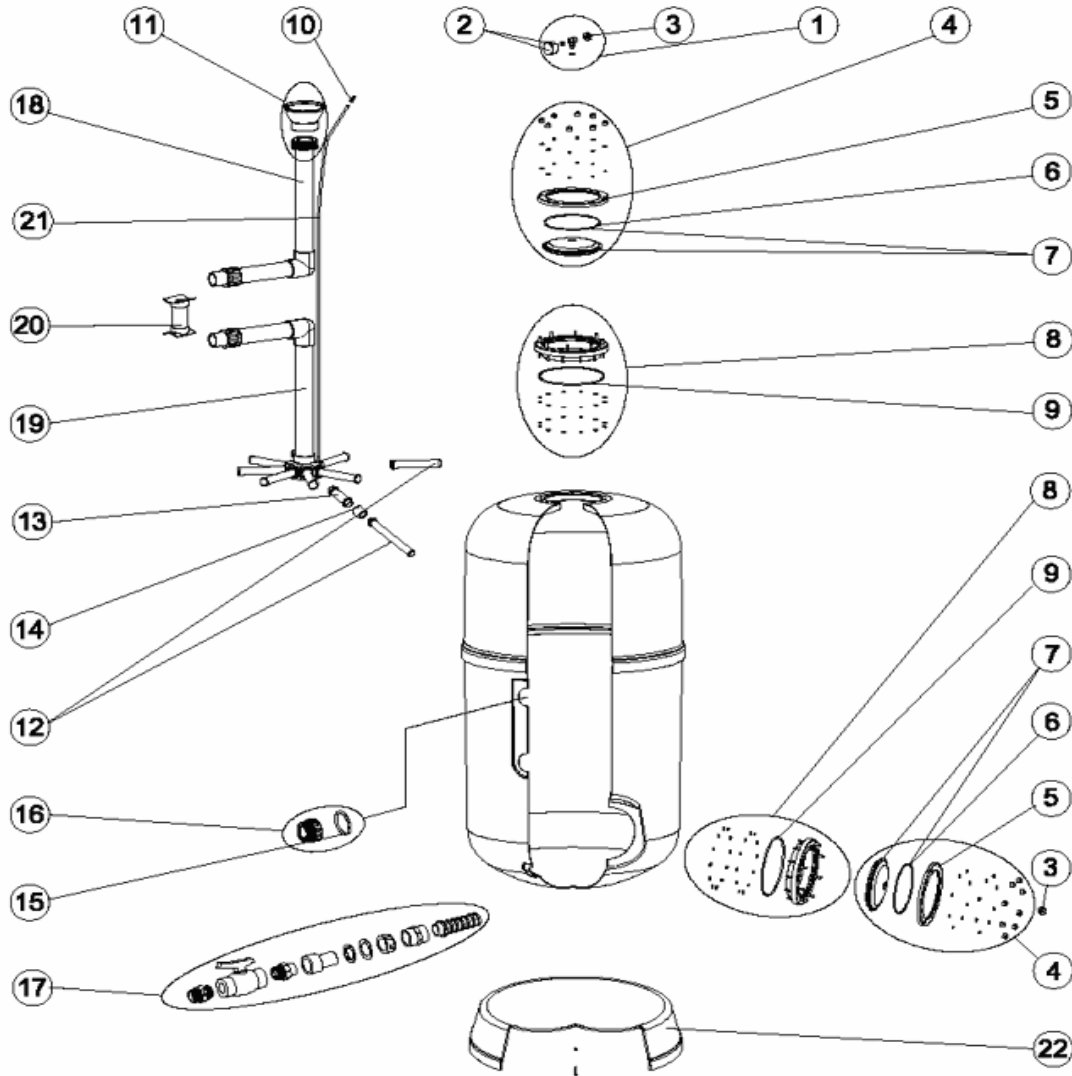


ITALIANO

POS	CODICE	DESCRIZIONE	POS	CODICE	DESCRIZIONE
1	4404180404	MANOMETRO COMPLETO	16	4404040103	"RACCORDO 1 1/2" + O-RING"
2	4404180405	"MANOMETRO 1/8" 3 KG./CM"	16	4404040112	RACCORDO USCITA 2" + O-RING
3	4404130107	"APPO 1/4" SCARICO ANONIMO CON GUARNIZIONE"	16	4404290108	"RACCORDO USCITA 2 1/2" + O-RING"
4	4404303002	GRUPPO COPERCHIO	17	4404303004	KIT SCARICO
5	4404160849	FLANGIA FISSAGGIO COPERCHIO	18	34029R0412	RACCORDO DIFFUSORE D.500
6	4404260106	GUARNIZIONE FLANGIA FISSAGGIO VALVOLE TOP	18	34030R0414	RACCORDO DIFFUSORE D.650
7	4404160847	COPERCHIO FILTRO D. 220 NERO	18	34031R0410	"RACCORDO DIFFUSORE D.800 2""
8	4404160809	ANELLO COLLO 20 VITI	18	41187R0411	"RACCORDO DIFFUSORE D.950 2 1/2""
9	4404020116	O-RING 255X4	19	34029R0422	KIT COLLETTORE D. 500
10	4404040108	SFIATO ARIA	19	34030R0425	KIT COLLETTORE D. 650
11	4404301004	CONO DIFFUSORE D. 50	19	34031R0423	KIT COLLETTORE D. 800
11	4404300910	CONO DIFFUSORE D. 63	19	41187R0421	KIT COLLETTORE D. 950 2 1/2"
11	4404190324	CONO DIFFUSORE D. 75	20	36055R0424	SUPPORTO COLLETTORE D.950
12	4404300915	"CANDELOTTO COLLETTORE 1" 175 MM"	21	04959R0434	TUBO PVC 6 MM
12	4404300916	"CANDELOTTO COLLETTORE 1" 225 MM"	22	19781R0102	BASE FILTRO D 500
13	4404260419	"CANDELOTTO COLLETTORE 1" 100MM"	22	34030R0101	BASE FILTRO D 650
14	4404260418	"MANICOTTO DA 1" PER CANDELOTTI"	22	34031R0101	BASE FILTRO D 800
15	4404040115	O-RING D 60X8	22	15788R0151	BASE FILTRO D 950
15	4404040211	O-RING D 70X5			

CODIGO 34029, 34030, 34031, 41187

DESCRIÇÃO: FILTROS ARTIC D. 500-650-800-950



PORTUGUES

POS	CODIGO	DESCRIÇÃO	POS	CODIGO	DESCRIÇÃO
1	4404180404	MANÔMETRO COMPLETO	16	4404040103	"RACORD 1 1/2" JUNTA TORICA"
2	4404180405	"MANOMETRO 1/8" 3 KG./CM"	16	4404040112	"ACOPLADOR SAÍDA 2" + JUNTA TORICA"
3	4404130107	"TAMPAO PURGA 1/4" ANONIMO COM JUNTA"	16	4404290108	"RACORD DE SAÍDA 2 1/2" + JUNTA TÓRICA"
4	4404303002	CONJUNTO TAMPA	17	4404303004	CONJUNTO PURDA AREIA
5	4404160849	ARO FIXAÇÃO TAMPA	18	34029R0412	DIFUSOR D.500
6	4404260106	JUNTA ARO FIXAÇÃO VALVULA TOP	18	34030R0414	DIFUSOR D.650
7	4404160847	TAMPA FILTRO D.220 NEGRA	18	34031R0410	"DIFUSOR D.800 2"
8	4404160809	ARO PESCOCOÇO 20 PARAFUSOS	18	41187R0411	"DIFUSOR D.9502 1/2"
9	4404020116	JUNTA TÓRICA 255X4	19	34029R0422	CJTO. COLECTOR D. 500
10	4404040108	PURGA AREIA	19	34030R0425	CJTO. COLECTOR D. 650
11	4404301004	CONO DIFUSOR D. 50	19	34031R0423	CJTO. COLECTOR D. 800
11	4404300910	CONO DIFUSOR D. 63	19	41187R0421	CJTO. COLECTOR D. 950 2 1/2"
11	4404190324	CONO DIFUSOR D. 75	20	36055R0424	SUPORTE COLECTOR D. 950
12	4404300915	"BRAÇO COLECTOR 1" 175 MM"	21	04959R0434	TUBO PVC 6 mm
12	4404300916	"BRAÇO COLECTOR 1" 225 MM"	22	19781R0102	PÉ FILTRO D 500
13	4404260419	"BRAÇO COLECTOR 1" 100MM"	22	34030R0101	PÉ FILTRO D 650
14	4404260418	"RACCORD UNIÃO 1"	22	34031R0101	PÉ FILTRO D 800
15	4404040115	JUNTA TÓRICA D 60X8	22	15788R0151	PÉ FILTRO D 950
15	4404040211	JUNTA TÓRICA D 70X5			